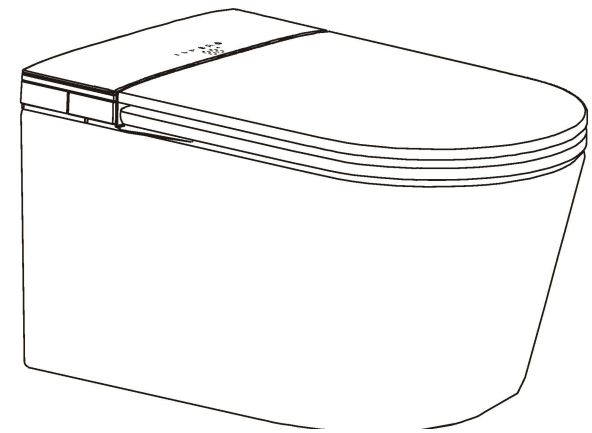


VOGO®

SMART EVOLUTION



INSTALLATION MANUAL

USER'S MANUAL

TECHNICAL SPECIFICATIONS

VOGO SPAIN

CONTENT

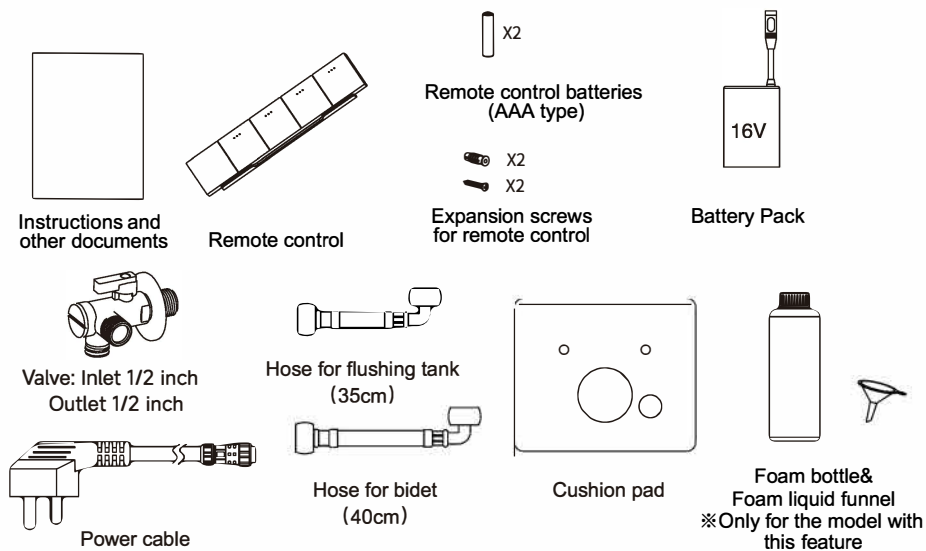
ACCESSORIES LIST	02
PRODUCT INTRODUCTION	03
SAFETY PRECAUTIONS	05
INSTALLATION PRECAUTIONS	05
TOOLS PREPARATION	07
WALL HUNG BRACKET PRE-INSTALLATION	07
SMART TOILET INSTALLATION	09
PRODUCT DIMENSION	18
REMOTE CONTROL OPERATING	19
BOTTOM OPERATION INSTRUCTIONS.....	21
OTHER FUNCTIONS DESCRIPTION	22
SMART TOILET VOICE CONTROL COMMANDS	23
MAINTENANCE	24
TROUBLESHOOTING	25
PRODUCT SPECIFICATIONS	27
WATER EFFICIENCY	29
WARRANTY CARD	30

ACCESSORIES LIST

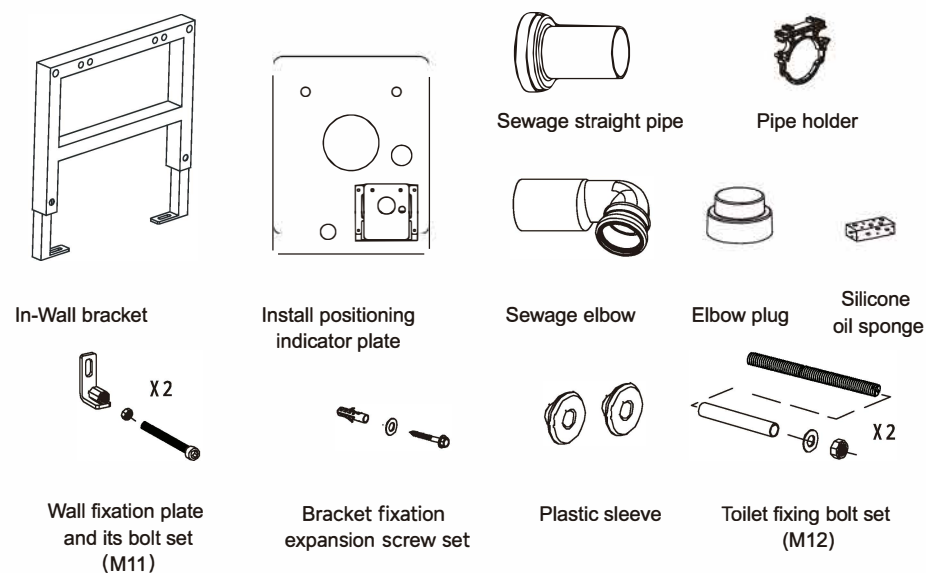
Manual VOGO Spain - W390

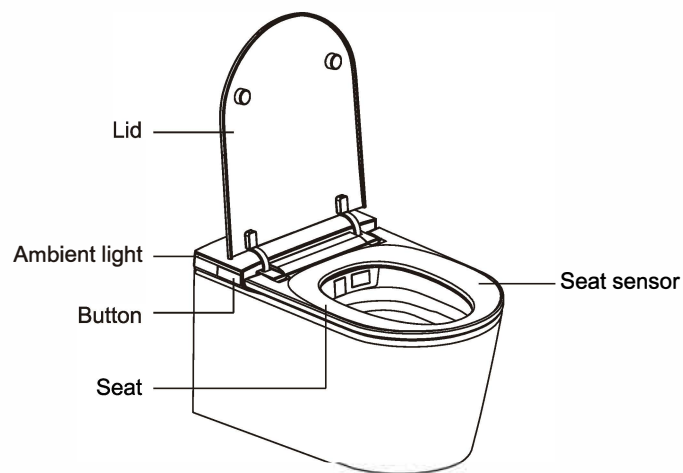
2

Smart Toilet Accessories



In-Wall Bracket Accessories



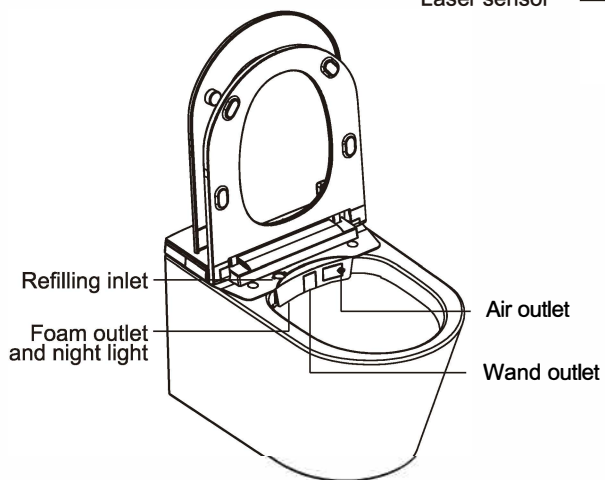
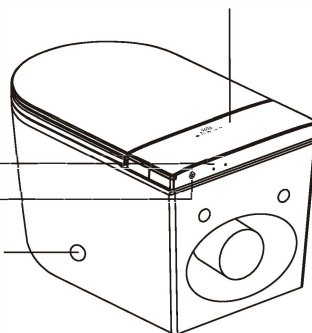


Digital display

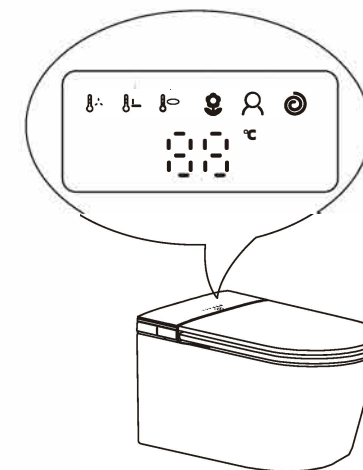
Voice Collection Inlet

Voice broadcast outlet

Laser sensor







- Air Temperature Symbol
- Water Temperature Symbol
- Seat Temperature Symbol
- Temperature Display
- Air-freshing Symbol
- Human Induction Symbol
- Flush Symbol






Error Code Indication

- E1 Seat temperature sensor error
- E2 Seat over temperature error
- E3 Air temperature sensor failure error
- E4 Water temperature sensor error
- E5 No water flow error
- E6 Water over temperature
- E7 Communication error between main board and sub board

Levels	Temperature Display		Celsius degree	Fahrenheit scale
Water temp	OFF		-- (Ambient temp)	-- (Ambient temp)
	Low		33℃	93.2°F
	Mid		37℃	98.6°F
	High		39℃	102.2°F
Seat temp	OFF		-- (Ambient temp)	-- (Ambient temp)
	Low		33℃	93.2°F
	Mid		37℃	98.6°F
	High		39℃	102.2°F
Air temp	OFF		-- (Ambient temp)	-- (Ambient temp)
	Low		45℃	113°F
	Mid		50℃	122°F
	High		55℃	131°F

Be sure to carefully read this "Safety Precautions" document before beginning installation.	
Please comply with all safety warnings and precautions.	
 Warning	This symbol indicates misuse may result in death or serious injury.
 Caution	This symbol indicates misuse may result in injury or physical damage.
 Warning	<ul style="list-style-type: none"> Do not use this product with any power supply other than the one specified. Doing so may result in heat or fire.
	<ul style="list-style-type: none"> When installing this product, comply with the regional codes and standards on installation work.
	<ul style="list-style-type: none"> Do not turn on the electricity and water supply for the product until installation work is complete.
 CAUTION	<ul style="list-style-type: none"> Before installing this product, keep the main inlet valve closed to avoid property damage caused by water leakage.
	<ul style="list-style-type: none"> Comply with all local plumbing and electrical codes. Power and water pipes should be wall mounted.
	<ul style="list-style-type: none"> The length of power cord is approximately 1.5 meters. Install the power socket within the reach area of power cord. Socket should be higher than floor where it will not be easily wet by water.
	<ul style="list-style-type: none"> Inspect the smart toilet carefully to check if there is any damage.
	<ul style="list-style-type: none"> In winter, when the product is transported over long distances or stored for a long time, the remaining water in the product may freeze. In order to prevent damage caused by freezing, the product must be placed in a warm room for 30 minutes to allow it to defrost naturally before installation as well as water and electricity connection.

 Warning	
 Must be obeyed	<ul style="list-style-type: none"> Refrain from sitting on the seat for long periods. It may cause low-temperature burns. To prevent the following persons from getting a moderate temperature burn during use, other persons should turn off the toilet seat heater. <ul style="list-style-type: none"> ① Young children, the aged and other users unable to set the temperature appropriately themselves. ② The ill, physically disabled and others who do not have freedom of movement. ③ Those using any medicines that cause drowsiness (sleeping or cold medicine).- those who have been drinking heavily, anyone severely fatigued and anyone else liable to fall asleep.
	<ul style="list-style-type: none"> Make sure the power plug is fully plugged into the outlet. If not fully inserted, it may cause electric shock or fire. Do not connect the power supply when cleaning.
 Forbidden	<ul style="list-style-type: none"> Do not use the product if a malfunction occurs. In case of breakdown or other problem, be sure to cut off power by means such as unplugging the power plug.
	<ul style="list-style-type: none"> Do not continue to use the product if it malfunctions. In the following situations, please unplug the power plug and close the water inlet valve.
	<ul style="list-style-type: none"> Do not do anything that may damage the power cord, power plug. Using a damaged power cord may result in a fire, electrical shock, heat or short. <ul style="list-style-type: none"> ① Do not strike, yank, twist, excessively bend, damage, alter, or heat the power cords. ② Also, do not place anything heavy on, bind or pinch the power cords.
	<ul style="list-style-type: none"> Do not use other water than allowed by the laws and ordinances of the region of use. Only use drinking water. Do not use seawater or recycled water. Doing so may cause irritation to the skin and malfunction.
	<ul style="list-style-type: none"> Patients with pacemakers should not use this product. Otherwise, electromagnetic interference will be generated, which may damage the function of the pacemaker and cause life-threatening consequences.
	<ul style="list-style-type: none"> Keep cigarettes and other open flames away from the product. Otherwise it may cause fire accidents.
	<ul style="list-style-type: none"> The appliance is not to be used by persons (including children) with reduced physical, sensory or mental capabilities, or lack of experience and knowledge, unless they have been given supervision or instruction. Do not apply strong force, mechanical shock, step on or stand on the toilet seat, toilet lid or main unit. Doing so may damage the product and cause injury or water damage.

TOOLS PREPARATION

Manual VOGO Spain - W390

7



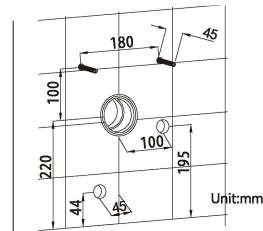
WALL HUNG BRACKET PRE-INSTALLATION

Manual VOGO Spain - W390

7

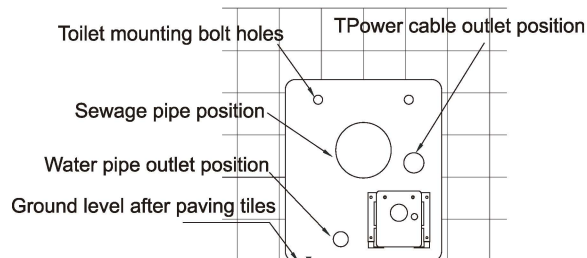
A - Dimension requirements after finishing installation.

▼ Ground level after finishing installation.



B - Determine the location of water and electricity installation.

According to the Installation positioning indicator plate, mark the positions of bolt holes, sewage pipe, water pipe outlet (water valve installation position) and power cable outlet; (Note: The back of indicator plate is the tiling wall, please follow the actual tiling to make adjustments accordingly).

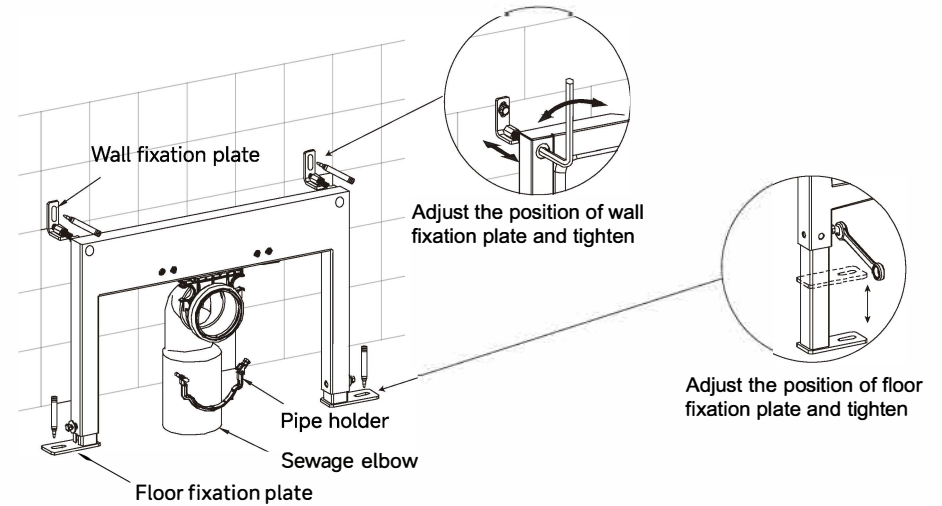


WALL HUNG BRACKET PRE-INSTALLATION

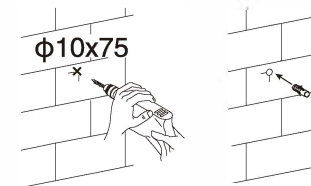
Manual VOGO Spain - W390

8

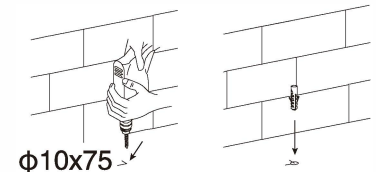
C - Adjust and fix the bracket



①②



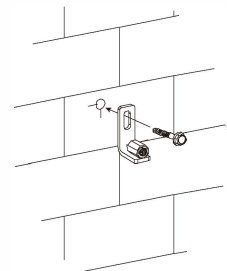
Drill holes on the wall and install expansion nuts.



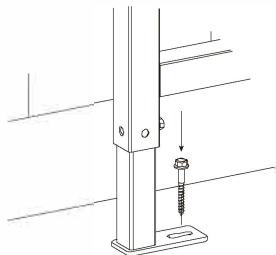
Drill holes on the floor and install expansion nuts.

③

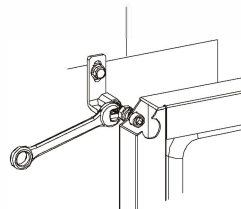
- 1 - Install the sewage elbow to the bracket, fasten it with pipe holder, and connect it to the external pipeline;
- 2 - According to the mounting bolt hole positions, adjust the height of the floor fixation plate and the length of the wall fixation plate and perform pre-tightening;
- 3 - Mark the drilling position for the wall and floor fixation. After drilling, install the expansion nuts;



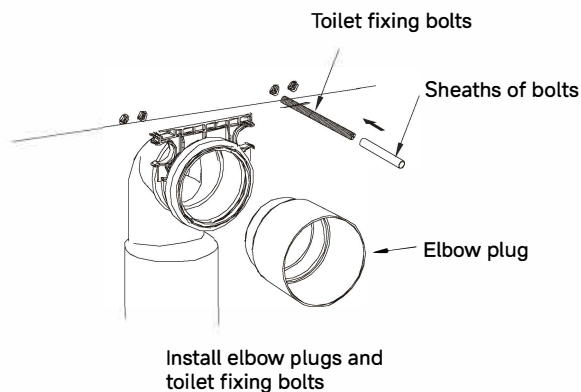
Lock the expansion bolts



Lock the expansion bolts



Lock the wall fixation nuts

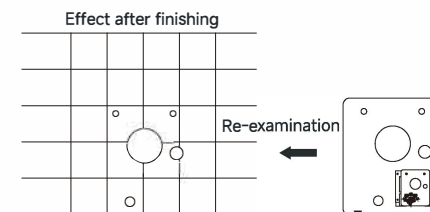
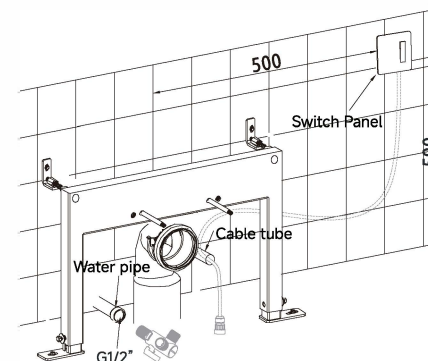


Install elbow plugs and toilet fixing bolts

④⑤⑥

- 4 - After aligning the bracket with the installation position, fix and pre-tighten it by corresponding screws;
- 5 - According to the marked water and electricity installation position, minute adjust the bracket to ensure that the position of the bracket is accurate and level, and then tight the floor fixation screws, wall fixation screws, and wall fixation bolts;
- 6 - Insert the sewage elbow pipe into elbow plug, and install the bolts and sheaths into the toilet's bolt holes.

D - Water and electricity pre-installation and wall building and tile laying.



- 1 - Fix the water pipe (internal tooth G1/2") at the designated position and install the plug;
- 2 - Fix the cable tube at the designated location, and perform anti-blocking treatment at the outlet;
- 3 - Pre-installed switch panel for independently controlling the ON and OFF of the smart toilet ;
- 4 - Use installation indicator plate to recheck after the wall building and tile laying. Ensure that the relevant positions are correct, and then remove the remaining sediment.

WARNING

1. PLEASE ENSURE PIPEWORK IS FLUSHED CLEAR OF DEBRIS BEFORE CONNECTION TO TOILET. NOT SUITABLE TO BE INSTALLED WITH A GRAVITY FEED SYSTEM.
2. Rainwater, demineralized water, sea water or grey water are not suitable to operate this equipment. Operate with normal drinking water only.
3. Electrical connection must be suitable following local electrical codes, to be conducted by qualified technicians or consult with the qualified retailer for details if unclear. (e.g. specific application of bathroom safety would require Sockets fitted with Residual Current Detectors in appropriate ratings). To contact us for the details if in questions.

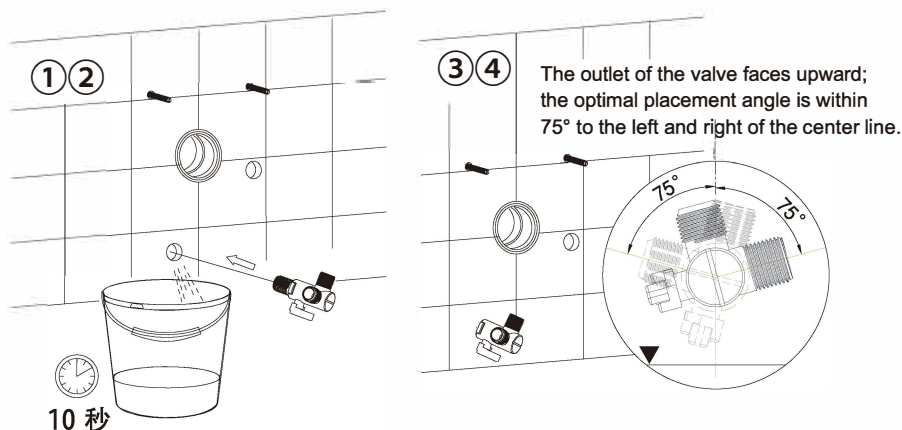
Check if the 3-pole grounding structure is grounded. 3-pole grounding structure must be grounded, or otherwise the product failure or electricity leakage will occur. Only connect to the socket of local wiring rules a circuit breaker with suitable ratings.

No user servicing parts inside. If the power cord or any part is damaged, contact the retail store or nearby customer service center for repair or replacement.

The new hose-sets supplied with the appliance are to be used and that old hose-sets should not be reused. Do not bend or twist the water supply hose.

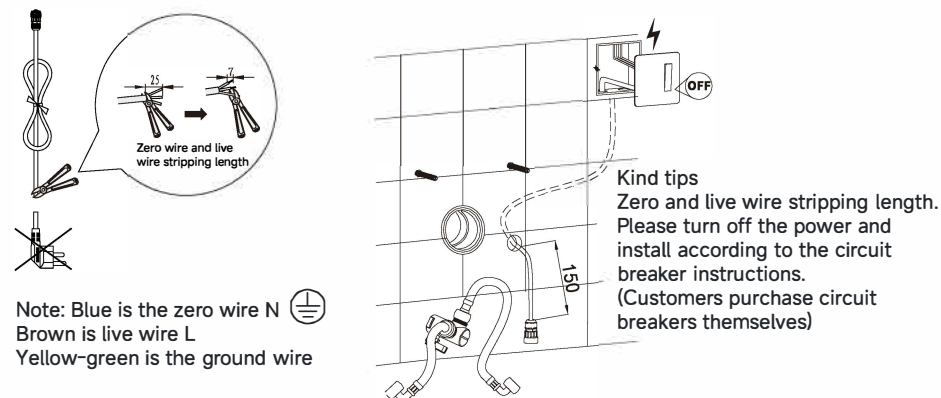
THIS DOUCHE SEAT MUST BE INSTALLED WITH APPROPRIATE BACKFLOW CONFORMING TO THE NATIONAL CONSTRUCTION CODE VOLUME THREE.

A - Water pipe installation

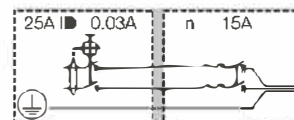


- 1 - Unscrew the plug of the water outlet pipe, remove the sediment on the inner and outer of the pipe, and turn on the external water pipe switch to pass the water for 10 seconds to remove residual impurities;
- 2 - Then turn off the external water pipe switch and measure the total water output for 10 seconds to ensure it reaches more than 1.4L, otherwise the best flushing effect cannot be achieved;
- 3 - Wrap seal tape around the screw thread of the water inlet end of the three-way valve, and then screw it clockwise into the outlet of the water pipe to ensure that the valve is placed within a reasonable range;
- 4 - Turn on the external water pipe switch and observe to ensure there is no leakage at the joint;
- 5 - Install the bidet hose and water tank hose on the corresponding water outlet of the valve.

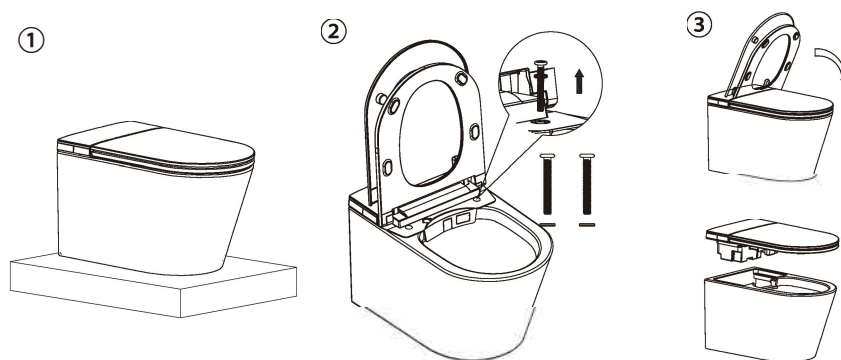
B - Power cable connection



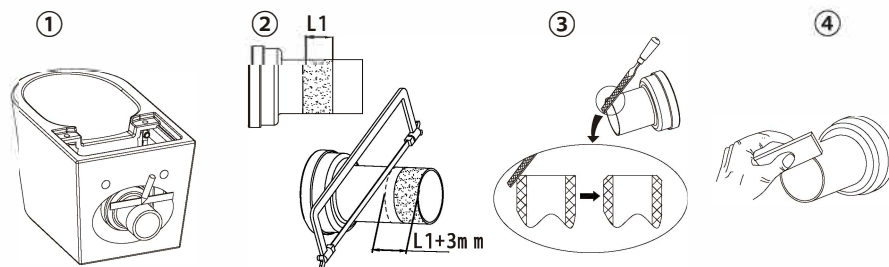
- 1 - Cut off the power cord plug. After the power cord is inserted into the wall, about 150mm of the power cord is exposed on the wall;
- 2 - Peel off the power cord and ensure that the ground wire is 5mm longer than the zero and live wires;
- 3 - Connect the power cord to the switch panel, make sure that the zero, fire, and ground wires are connected correctly, then tighten the wiring screws and cover the switch panel.
- 4 -The product must be earthed. Check if the 3-pole grounding structure is grounded. 3-pole grounding structure must be grounded, or otherwise the product failure or electricity leakage will occur.
Only connect to the socket of local wiring rules a circuit breaker with suitable ratings.



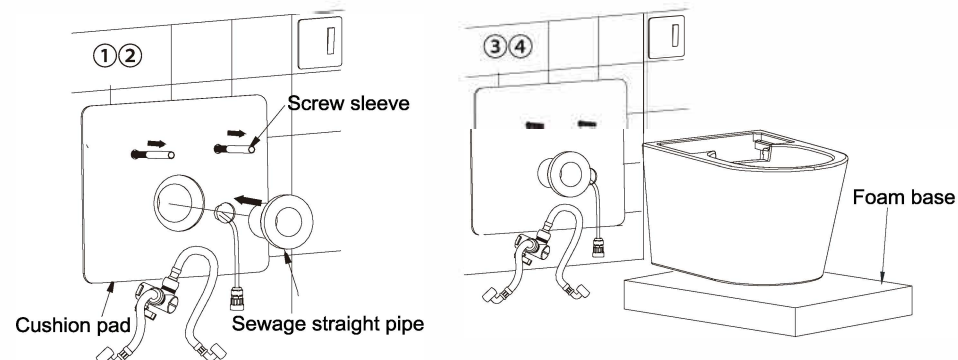
C - Smart Toilet Installation



- 1 - Remove the package, take out smart toilet and protective foam, and check the accessories list;
- 2 - Open the cover and seat, remove the screws and washers;
- 3 - Close the cover and seat, remove the cover unit, paying attention to protecting the appearance.

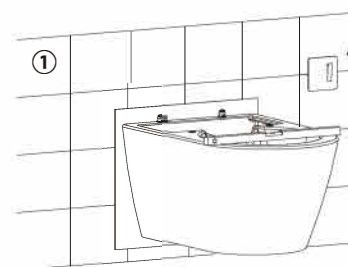


- 1 - Check the length of the sewage pipe;
- 2 - Saw off the excess pipe length;
- 3 - Grind and chamfer the ends of the elbow pipes and remove the burrs;
- 4 - After polishing, apply silicone oil to the end face.

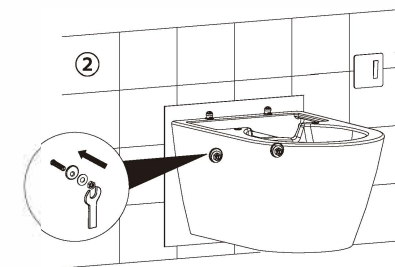


- 1 - Level the toilet with a spirit level;
- 2 - Insert the plastic sleeve and lock the nut gasket;

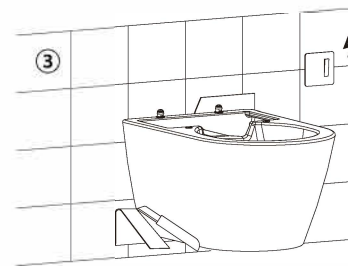
- 3 - Cut off the excess cushion pad;
- 4 - Apply glass glue around the toilet.



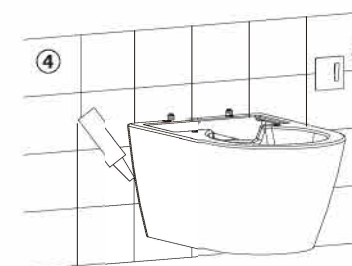
- 1 - Level the toilet with a spirit level;



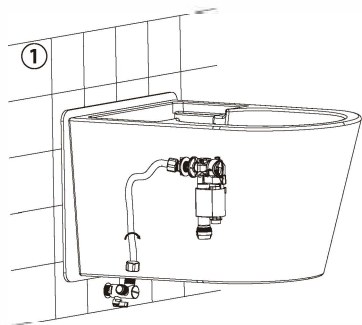
- 2 - Insert the plastic sleeve and lock the nut gasket;



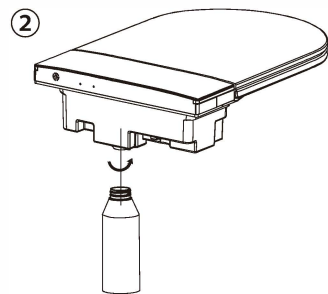
- 3 - Cut off the excess cushion pad;



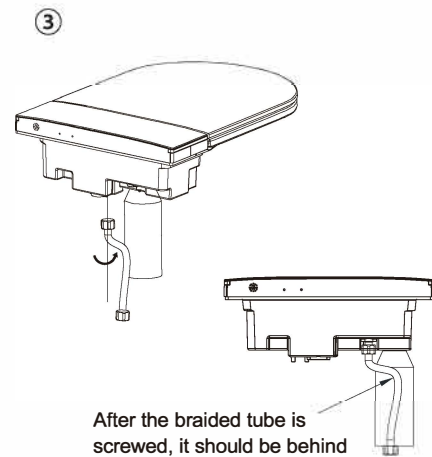
- 4 - Apply glass glue around the toilet.



1 - Connect the hose of water tank to the inlet valve of water tank and lock it;

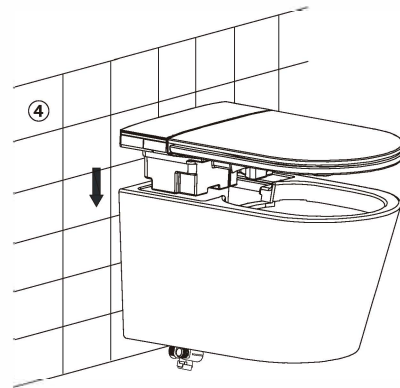


2 - Screw the foam bottle into the cover unit, connect the wire of pump, foot sensor and power cord respectively;

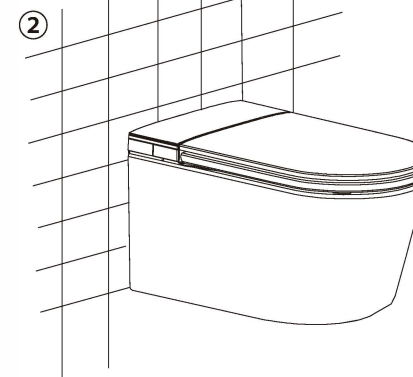
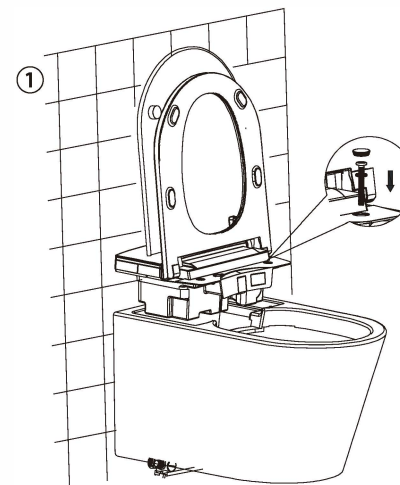


After the braided tube is screwed, it should be behind the foam bottle and the direction is as shown in the picture.

3 - Put the cover unit into the toilet, connect the hose of bidet to the inlet valve of cover unit and lock it;

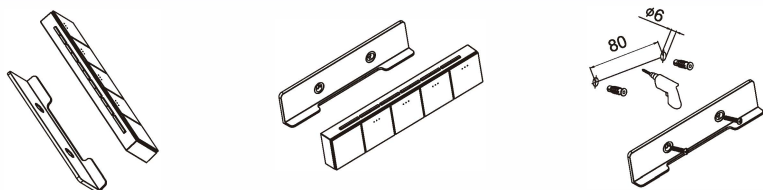


4 - Put the cover unit into the toilet, adjust the alignment and make uniform gap.



1 - Open the cover and seat, lock the screws, and insert the decorative cap;
 2 - Close the seat and cover, finish the installation of smart toilet ;
 3 - Arrange the power cord and buckle it to the cable clip at the bottom of the toilet;
 (The power cord and leakage protector are not allowed to be exposed on the bottom of the toilet)

D - Remote Control Installation



Method 1

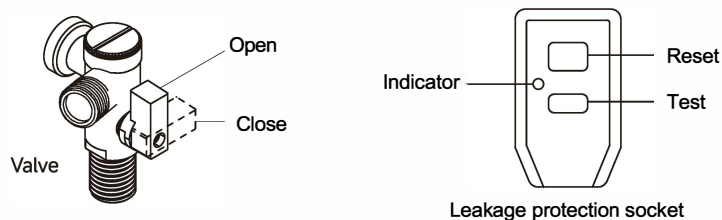
(Apply for smooth tiles, glass and smooth wall)

- 1 - Choose proper installation location (Not easy to get wet , easy to takeout or operate);
- 2 - Clean the dust, oil stains, water droplets etc. on the installation wall;
- 3 - Peel off the adhesive tape on the back of the remote control bracket, align the position, and press evenly for 1-2 minutes to make it stick tightly; Placing the remote control after 12 hours.

Method 2

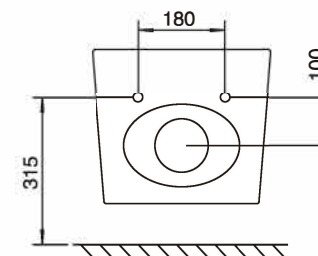
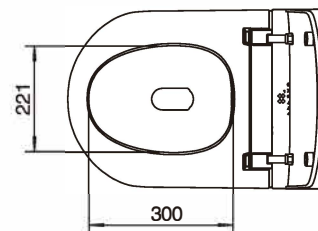
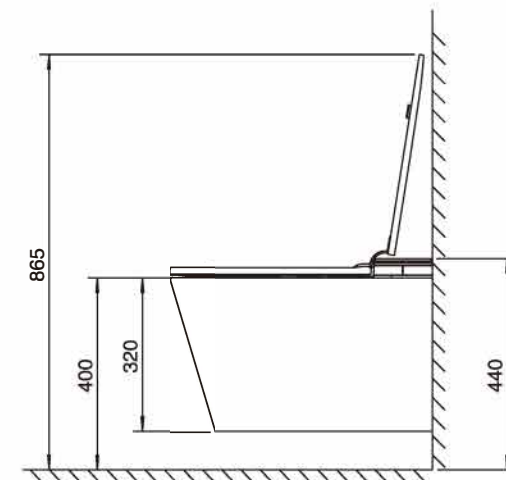
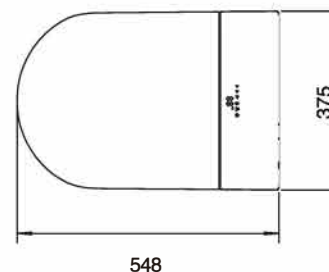
- 1 - Choose proper installation location (Not easy to get wet , easy to takeout or operate);
- 2 - Fix the bracket on the wall by installation accessories pack;
- 3 - Place the remote control on the bracket.

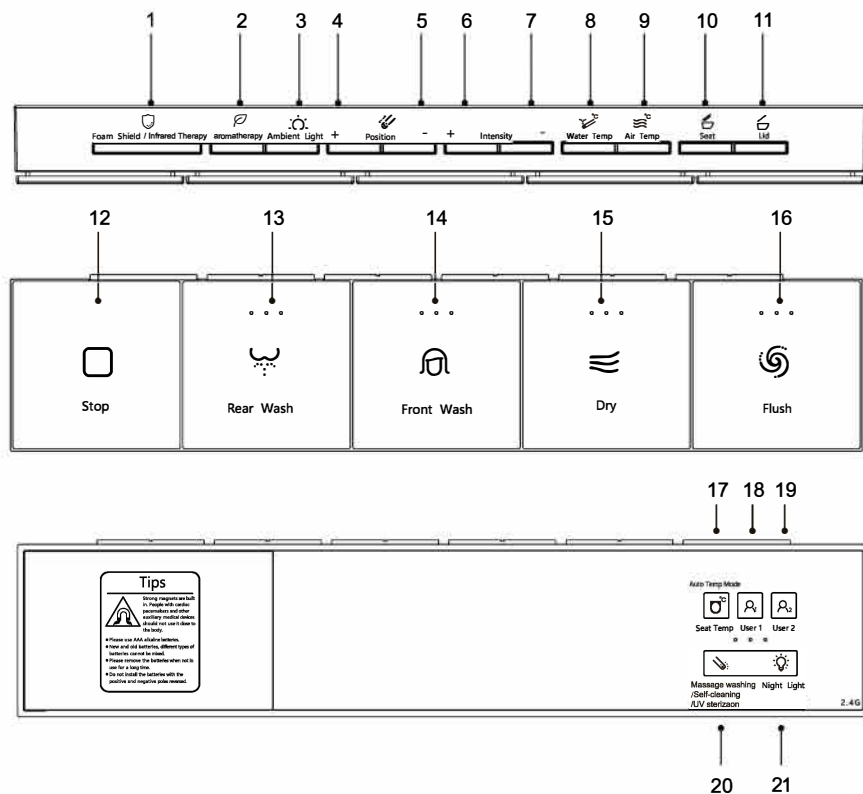
F - Checking after Installation



- 1 - Turn on the valve to pass the water, and check if there is leakage in the pipeline connections (※ If there is leakage, please re-tighten the nuts and install again);
- 2 - Power on and check the leakage protection switch : press the [Reset] button, the indicator lights up, then press the [Test] button, the indicator will go out, and then press the [Reset] button again, the indicator will light up, then Smart toilet can be used normally.
- 3 - Press the [Flush] button on the smart toilet or remote control to check the flushing effect meets the requirements and is there leakage at the joints of each pipe;
- 4 - Check above and there are no problem, you can perform other functions according to the instructions to check whether each function is normal.

Unit: mm





NOTICE:








Only when the user is seated and the buzzer beeps can the functions of front/rearwashing and drying be activated.



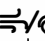



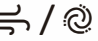

Please sit backward on the seat for correct washing position and to avoid splashing.

The nozzle will continue to spray for 1-2 seconds after user stands up during washing.

so please press "Stop" button before standing up.

FUNCTION	FUNCTION DESCRIPTION
Remote code matching	Within 10s after the toilet is powered on, long press the "Rear Wash" and "Foam Shield / Infrared Therapy" buttons at the same time. The toilet will make a long beep, indicating that the code matching is successful.
1 Foam Shield	If no function is in operation, short press the "Foam Shield" button to start the foaming function. (※Only for the model with this feature.) Infrared Therapy: ※This model is without this feature.
2 aromatherapy	※This model is without this feature.
3 Ambient Light	1 - Short press the "Ambient Light" button to switch on/off the ambient light. 2 - Long press the "Ambient Light" button to enable/disable the automatic ambient light mode.
4/5 + Position -	During washing mode, short press the "+" key, to move forward; short press the "-" key, to move backward. (There are 5 positions for adjustment).
6/7 + Intensity -	During washing mode, short press the "+" key to increase the washing intensity; short press the "-" key to decrease the washing intensity. (There are 3 levels for adjustment).
8 Water Temp	During washing or Manual-temperature mode, Short press the "Water temp" button to select the temperature level from OFF / Low / Mid / High level.
9 Air Temp	During drying or Manual-temperature mode, Short press the "Air temp" button to select the temperature level from OFF / Low / Mid / High level.
10 Seat	While not seated, short press the "Seat" button to open / close the seat. (※Only for the model with this feature)
11 Lid	While not seated, short press the "Lid" button to open / close the Lid. (※Only for the model with this feature)
12 Stop	If any function is in operation, short press the "Stop/Flush" button to stop the current function. (Except open the cover/seat and flushing).
13 Rear Wash	1 - Please seat before starting washing. 2 - Short press "Rear Wash" button to start the rear washing function. 3 - Short press again to turn on/off the reciprocating movement of the boom.
14 Front Wash	1 - Please seat before starting washing. 2 - Short press "Front Wash" button to start the front washing function. 3 - Short press again to turn on/off the reciprocating movement of the boom. 4 - Long press "Front Wash" button to start Kid mode (Under Kid mode, washing intensity is fixed at the 1st levels and not adjustable, Washing position is fixed at the furthest position and not adjustable. Air temperature is fixed at the Low Level and not adjustable. Water temp are available for OFF / Low / Mid level only.

15		<p>1 - While seated, short press the "Drying" button to start the drying function.</p> <p>2 - During drying, short press "Drying" button to select the level of air speed from the first / second / third / fourth / fifth level; (※Only for models with super drying feature)</p> <p>3 - During seating, long press "Drying" button to start the fifth air speed drying. (※Only for models with super drying feature)</p>
16		<p>If no function is in operation, short press the "Stop/Flush" button to start the flushing function.</p>
17	<p>Auto Temp</p>  <p>Seat Temp</p>	<p>1 - During seating or Manual-temperature mode, Short press the "Seat temp" button to select the temperature level from OFF / Low / Mid / High level.</p> <p>2 - Long press the "Auto Temp" button to turn on/off the Auto-temperature.</p> <p>Auto-temp: Water temperature, air temperature, and seat temperature are automatically adjusted according to the ambient temperature.</p> <p>(While seat, it is available to adjust the temperature grades of functions. it return to Auto Temp mode when function stop. While not seat, temperature is not adjustable.)</p>
18 / 19	  <p>User 1 User 2</p>	<p>1-Long press the "User 1"/"User 2" button to memorize the current water temperature, air temperature, seat temperature, etc.</p> <p>2- Short press the "User 1"/"User 2" button, to use the memorized setting.</p>
20	 <p>Message washing /Self-cleaning /UV sterilization</p>	<p>1 - While not seated, short press "Self-Cleaning" to start automatic cleaning of the wand and nozzle.</p> <p>2 - Short press again to start/close the reciprocating movement wand.</p> <p>3 - Long press "Self-Cleaning" button to start/close the automatic UV sterilization; Under automatic UV sterilization mode, the UV sterilization is automatically turned on when the lid is closed, and it will automatically end after about 2 minutes or when other functions are operated or human body is sensed.</p> <p>4 - During washing mode, short press "Self-Cleaning" button to switch on/off message washing.</p>
21	 <p>Night Light</p>	<p>Short press the "Night Light" button to turn on/off the night light.</p>

Button definition	Button function
 <p>Rear wash</p>  <p>Front wash</p>	 <p>Drying/Flushing</p>  <p>Stop</p>
	While seated, short press to start rear washing function.
	While seated, short press to start front washing function.
	<p>If no function is in operation, short press to flush.</p> <p>If seated state, long press to start the drying function.</p>
	If any function is in operation, short press to stop the current function.

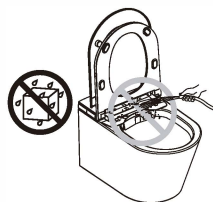
FUNCTION	FUNCTION DESCRIPTION
Foot touching button	(※Only for the model with this feature.) If not seated, short touch the foot switch to start the flushing function.
	(※Only for the model with this feature.) While lid is close, short touch the foot sensor to open the lid. While lid is open and seat is close, short touch the foot sensor to open the seat. While lid and seat are open, if seat opening time is less than 6 seconds, short touch the foot sensor to close the seat, if seat opening time is more than 6 seconds, short touch the foot sensor to close the lid and seat then perform flushing.
Wet The Toilet Bowl After Seated	Seating for 2 seconds, once seated again, the upper water nozzle flushes automatically to pre-wet the inner surface of the toilet bowl.
Flushing After Leaving seat	(※Only for the model with this feature.) Close the lid and flush after leaving the seat for 10 seconds. (Perform half flush if seating time less than 2 minutes, perform full flush if seating time more than 2 minutes.)
	(※Only for the model with this feature.) Perform flushing after leaving the seat for 10 seconds. (Perform half flush if seating time less than 2 minutes, perform full flush if seating time more than 2 minutes)
Automatic Deodorization Function	Once human seated, it automatically starts the chemical catalyst deodorization device.
Automatic Open Lid	(※Only for the model with this feature.) When approaching the toilet, it opens the lid automatically. when no people approaching more than 2 minutes, it closes the lid automatically. (If seat is opened more than 6s, it closes the lid and flushing.)
No-power Flush	In the state of power outage, short press the knob to start the flushing function.
Air-freshing	When seated, Air-freshing function will automatically start.

(※Only for the model with this feature.)

FUNCTION	COMMAND	REPLYING BY TOILET
Wakeup word	Hi Mate	Hi, I am here!
Lid	Open the lid	OK
	Close the lid	OK
Seat	Open the seat	OK
	Close the seat	OK
Wash	Rear wash	OK
	Female wash	OK
Drying	Start drying	OK
	Stop drying	OK
	Start drying	OK
Stop	Stop	OK
Spray	Wand forward	OK
	Wand backward	OK
Flush	Flush	OK
Water Temp	Increase Water Temperature	OK
	Decrease Water Temperature	OK
Seat Temp	Increase Seat Temperature	OK
	Decrease Seat Temperature	OK
Massage	Start Wand Massage	OK
	Stop Wand Massage	OK
Air Temp	Increase Drying Temperature	OK
	Decrease Drying Temperature	OK
Water Pressure	Increase Water Pressure	OK
	Decrease Water Pressure	OK
Light	Turn on the Night Light	OK
	Turn on the Ambient Light	OK
	Turn off the Night Light	OK
	Turn off the Ambient Light	OK
ECO	Turn on Power save mode	OK
	Turn off Power save mode	OK
Speaker on/off	Enable Speaker	OK
	Disable Speaker	OK
Volume adjustment	turn volume up	OK
	turn volume down	OK
Bubble	Start Bubbling	OK

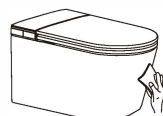
Automatically exit voice control if no more commands for 15 seconds;
The smart toilet announces "I am off! Goodbye" and then exits voice control mode.

1. Do not add water or detergent to the electrical part of the smart toilet or inside of the remote control. Do not get the electrical parts and power plug wet with water or detergent. Otherwise there may be a risk of electric shock and fire.

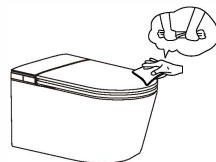


2. Please wipe with a soft cloth soaked in a diluted, neutral kitchen detergent. Then, wipe it with a soft cloth soaked in water so that no detergent remains.

※ Do not use inappropriate cleaning agents, such as: toilet cleaners, bleach, alcohol, deodorizing powder, gasoline etc.



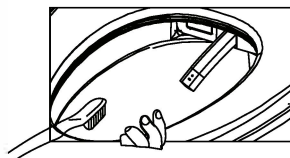
3. Please wipe the product with a soft, damp cloth. If the dirt is not removed in time, it will become difficult to clean. Please wipe with water frequently. In addition, wiping with water can prevent the generation of static electricity, which will absorb dust and make the product black and dirty.



Nozzle cleaning and maintenance methods

● Self-cleaning: Short press "Self-Cleaning" to start automatic cleaning of the wand and nozzle.

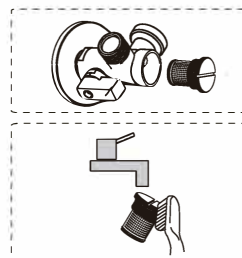
※ If the nozzle is dirty, clean it with a toothbrush. Do not use too much force when brushing the nozzle, otherwise it will damage the nozzle.



Filter maintenance

If poor spray performance occurs under normal conditions:

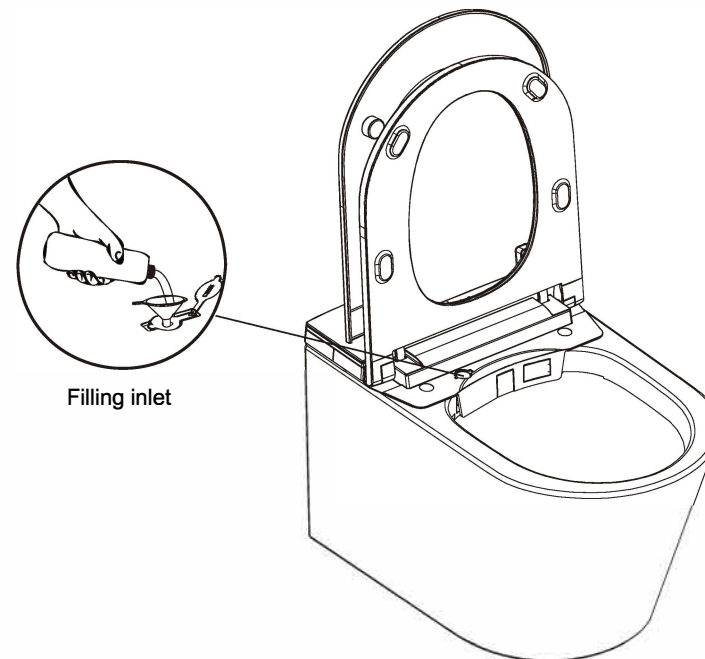
1. Turn off power and the angle valve.
2. Unscrew angle valve nut.
3. Remove filter net.
4. Clean out the filter net under running water using a toothbrush.
5. Reinstall filter net and angle valve nut.
6. Turn on the angle valve and connect the power.



Foam liquid adding: (※ Only for the model with this feature.)

1. open the rubber cap of the liquid filling port.
2. Put the funnel into the filling port, hold it, and slowly pour the foam liquid into the funnel with the other hand. (The liquid volume is less than 450 ml, Do not quickly pour the foam liquid into the funnel to avoid the foam liquid overflowing)
3. Cover the rubber cap, Push the panel back to its original position.

※ Note: The foaming effect will not ideal in the first few uses. Because the pipe is empty inside.



Please refer to the table below for the solutions of problems which might occur in using this product. If the problem still exists after trying the solutions below, please contact our customer service center for further help.

Problems	Possible Causes	Solutions
Product doesn't power on	Loose connction of power socket.	Check power socket.
	Product has been turned off.	Please try long-press of "Stop" button on remote control to turn on the
Washing function doesn't work properly.	Seat sensor can't detect people seating.	Please adjust the seating position.
	Water mains failure.	Please wait until water mains restored.
	Water inlet valve on the wall is turned off.	Turn on the valve.
	Filter is blocked.	Please clean the filter or replace it.
	Water supply pipe is trapped.	Reconnect the pipe.
Washing pressure is low.	Filter is partially blocked.	Please clean the filter or replace it.
	Washing pressure is set to a low level.	Please increase the washing pressure from remote control.
Washing suddenly stops.	Washing period has timed out.	Restart the washing function.
	Seat sensor can't detect people seating.	Please adjust the seating position, and restart the washing function.
Drying Temp is low.	Drying temperature is set to a low level.	Increase the drying temperature level from remote control.
Drying suddenly stops.	Seat sensor can't detect people seating.	Please adjust the seating position, and restart the drying function.
	Drying period has timed out.	Restart the drying function
Seat Temp is low.	Seat temperature is set to a low level.	Increase the Seat temperature level from remote control.
	Product is just being turned on.	Please give some time for temperature rise.
	Ambient temperature is too high when Auto-Temp mode is enabled.	Disable Auto-Temp mode and re-adjust temperature level.
Remote control doesn't work.	Battery is low.	Change batteries.
	Batteries are installed wrongly.	Reinstall the batteries according to the mark.
Flush is not working properly.	Filter is blocked.	Clean the filter.
	Water supply pipe problem.	Check the water supply pipe.
	The gap time between two flushes is less than 30 seconds.	make sure of more than 30 seconds gap time between two consecutive flushes.
	Drain is blocked.	Unblock the drain.

Main Unit	Rated voltage	110V~/60Hz or 220V~/50Hz (As per actual)
	Rated power	1150W / 1050W
	Water proof	IPX4
	Power cord length	About 1.5m
Toilet	Flush volume	5.0L
	Flushing mode	Siphonic jet
	Outlet outside diameter	≤ 3.1 inches (≤ 80mm)
	Drainage method	P-trap
	Water pressure range	Minimum water pressure 0.08MPa, Maximum water pressure 0.75MPa
Cleaning device	Heating mode	Instant
	Heating power	1600W
	Water temperature	4-level adjustment
	Water pressure	3-level adjustment
	Cleaning mode	Rear washing/Oscillating washing, Front washing/Oscillating washing
	Nozzle position	5-level adjustment
	Water pressure protector	Pressure maintaining device, Automatic pressure relief device
	Anti-fouling device	Automatic nozzle cleaning, Anti-backflow device, Anti-syphon device, Filter device
	Safety device	Thermal fuse, Ground protection, Thermostat, Water temperature sensor, Over temperature protection.
Deodorization	Deodorization method	Photocatalyst-free
Drying device	Warm air temperature	4-level adjustment
	Heating power	230W
	Safety device	Thermal fuse, Thermostat, Wind temperature sensor

Heated seat	Surface temperature	4-level adjustment
	Heating power	50W
	Burn protection	After 10 minutes of use, the seat temperature will automatically drop slowly to a low level
	Safety device	Seat sensor, Temperature sensor, Thermostat, Thermal fuse
Caring device	Night light assembly	Always on, Always off
	User ID setting	To avoid interference when used by multiple users
	Automatic flushing	Automatic flushing after use
	Foam Shield function	Splash-proof and odor-proof can be realized
	Foot sensor open lid	Foot sensor open lid/seat can be realized
	Foot sensor flushing function	Foot sensor flushing
	Auto-open lid function	Auto-open lid function can be realized
Antibacterial site		Seat, Nozzle

Rated power: Under the condition of ambient temperature 23°C / 73°F, water static pressure 0.18MPa±0.02MPa, water temperature 15°C / 59°F, power toilet on, set water pressure, seat temperature, water temperature to the highest level in turn and perform one rear washing cycle.

The energy and water efficiency levels of smart toilets are divided into three levels, the 3rd level is the lowest energy and water efficiency. The unit cycle energy consumption, average washing water consumption and average flushing water consumption of each level should comply with the provisions of Table 1.

Table 1 Smart toilet energy efficiency and water efficiency level indicators

Smart toilet energy efficiency and water efficiency levels			Level 1	Level 2	Level 3
Energy efficiency level index	Energy consumption per cycle/(kw.h)	With seat heating function	≤0. 030	≤0. 040	≤0. 060
		Without seat heating function	≤0. 010	≤0. 020	≤0. 030
Water efficiency level index	Average water consumption for washing/L		≤0. 30	≤0. 50	≤0. 70
Note : For each water efficiency level, the average half-flush water consumption of a dual-flush toilet shall not be more than 70% of the maximum water consumption limit for full flushing.					
The energy efficiency and water efficiency level of this product is Level 2.					

Installation receipt

Warranty object	Complete machine
Product model	
Warranty period	(from the date of purchase)
Purchase date	
Install date	
Invoice number	
Username	
Contact number	
User address	

(This joint factory stub)

Installation receipt

Warranty object	Complete machine
Product model	
Warranty period	(from the date of purchase)
Purchase date	
Install date	
Invoice number	
Username	
Contact number	
User address	

(this joint store stub)

WARRANTY CARD

Warranty object	Complete machine
Product model	
Warranty period	(from the date of purchase)
Purchase date	
Install date	
Invoice number	
Storename	
Contact number	
Store address	

(This link is saved by the user)

Respected user:

During the warranty period specified in this warranty card, when the smart toilet (hereinafter referred to as the product) fails, the user can take this card and a valid invoice to the dealer of the product you purchased for repair or request on-site repair service.

1. From the date of purchase, the user can use this card and valid invoice for free maintenance for faults caused by correct use within the warranty period.

2. Even within the warranty period, if it is one of the following (1)~(5), the repair fee (material fee and labor fee) shall be charged as appropriate:

(1) The situation where the matching warranty card and purchase valid invoice cannot be presented.

(2) Failures caused by failure to follow the usage and precautions given in the instruction manual.

(3) Failure and damage caused by self-disassembly, repair and modification.

(4) Failure and damage caused by external reasons such as force majeure.

(5) Damage caused by transportation, unloading, extrusion, etc.

3. The scope of responsibility of this warranty card is limited to the maintenance of the product, and does not assume any other responsibility. If the products beyond the warranty period need to be repaired and guaranteed, the door-to-door fee, labor fee and material fee will be charged as appropriate. If there is any unclear place, please consult the local dealer.

4. This warranty card will not be replaced if it is lost, please keep it properly.



VOGO[®]
SMART EVOLUTION